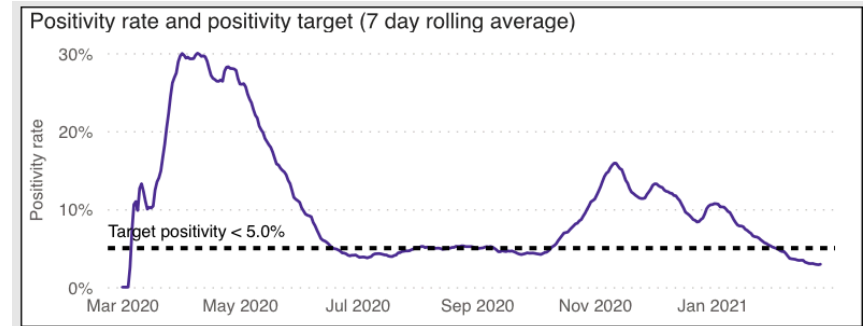


Test Data

- 2.9% test positivity
 - Male-identifying at higher rate than female-identifying
 - Latinx has highest rate of infection
 - Black has highest rate of mortality
 - Most cases 18-29 yo
 - Most deaths 60+



<https://www.chicago.gov/city/en/sites/covid-19/home/covid-dashboard.html>

DePaul University Newline > Sections > Campus and Community > DePaul to expand on-campus COVID-19 testing on March 9

DEPAUL TO EXPAND ON-CAMPUS COVID-19 TESTING ON MARCH 9

<https://resources.depaul.edu/newline/sections/campus-and-community/Pages/COVID-19-testing.aspx>

Comparing the Vaccines

Vaccine	Effectiveness*	# of doses	Storage	Technology	FDA Approved	UK Approved
Moderna	95%	2	-20 C / -4 F	mRNA	Emergency	Yes
Pfizer	95%	2	-70 C / -94 F	mRNA	Emergency	Yes
Johnson & Johnson	85%	1	4 C / 40 F	Modified viral vector (adenovirus)	Emergency	In application
Novavax	89.3%	2	8 C / 46 F	Protein subunit	None	In application
Sputnik	92% (????)	2	4 C / 40 F	Modified viral vector	None	No
Oxford-Astra Zeneca	70%	2	4 C / 40 F	Modified viral vector	None	Yes

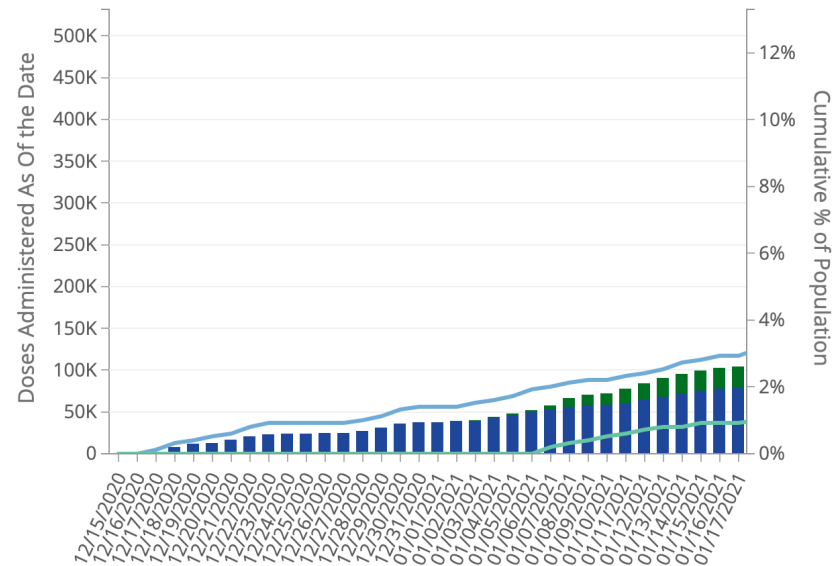
*At preventing severe disease

All 3 FDA emergency use vaccines have 100% effectiveness from hospitalization and death

Dr. Fauci “I would take whatever vaccine would be available to me”
<https://www.cnn.com/2021/02/28/politics/anthony-fauci-vaccines-cnntv/index.html>

Vaccine Data

- 13.3% of Chicagoans have had first dose
- 6.4% of Chicagoans are fully immunized
- New United Center clinic opening
 - 6,000/day
 - Only 65+ to start
 - Separate vax supply
 - Appts open Thurs, 8:30am
www.zocdoc.com



<https://www.chicago.gov/city/en/sites/covid19-vaccine/home/vaccine-data.html>

Keep Up the Public Health

5 CHICAGO LOCAL WEATHER VIDEO INVESTIGATIONS ENTERTAINMENT TRAFFIC

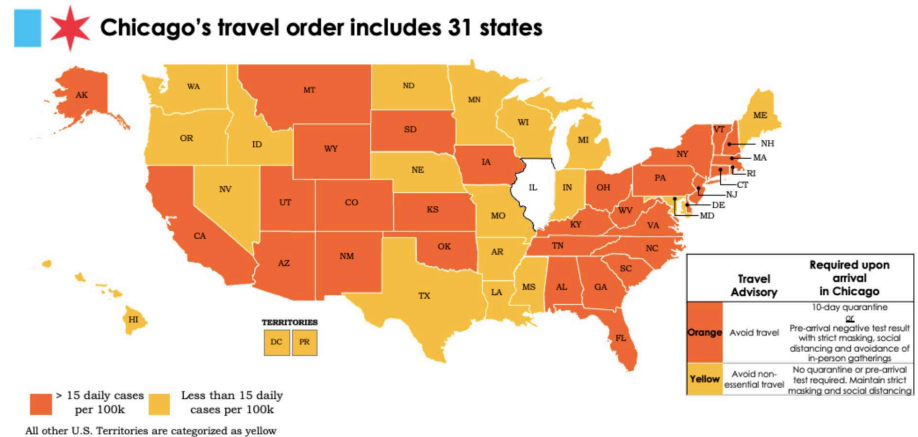
TRENDING COVID Vaccine: How to Sign Up Coronavirus Live Blog NBC LX Race in Chicago Coronavirus Stats Watch: 'Vaccinated State' Docuser

CORONAVIRUS PANDEMIC

Virus Updates: CDC to Release Guidance for Fully Vaccinated People

- Thursday, CDC will announce that people who are fully vaccinated can gather in small groups

- Fully vaccinated do not need to isolate after out-of-state travel



<https://www.chicago.gov/city/en/sites/covid-19/home/emergency-travel-order.html>

- This order applies to returning Chicago residents and out-of-state visitors arriving in Chicago. Learn more about COVID-19 testing.
 - Vaccinated persons (returning travelers who live or work in Chicago, or visitors to Chicago) who have travelled domestically are not required to quarantine if they are: asymptomatic; and
 - Fully vaccinated (i.e., are ≥ 2 weeks following receipt of the second dose in a two-dose COVID-19 vaccine series or ≥ 2 weeks following receipt of 1 dose of a single-dose COVID-19 vaccine).
 - It is recommended that you bring a copy of your COVID-19 vaccination records while traveling.

abc NEWS VIDEO LIVE SHOWS CORONAVIRUS

'Please hear me clearly': CDC director urges states not to reopen too soon as cases plateau

Over the last week, the daily number of cases and deaths has leveled off.



President Biden ✓

@POTUS

United States government official



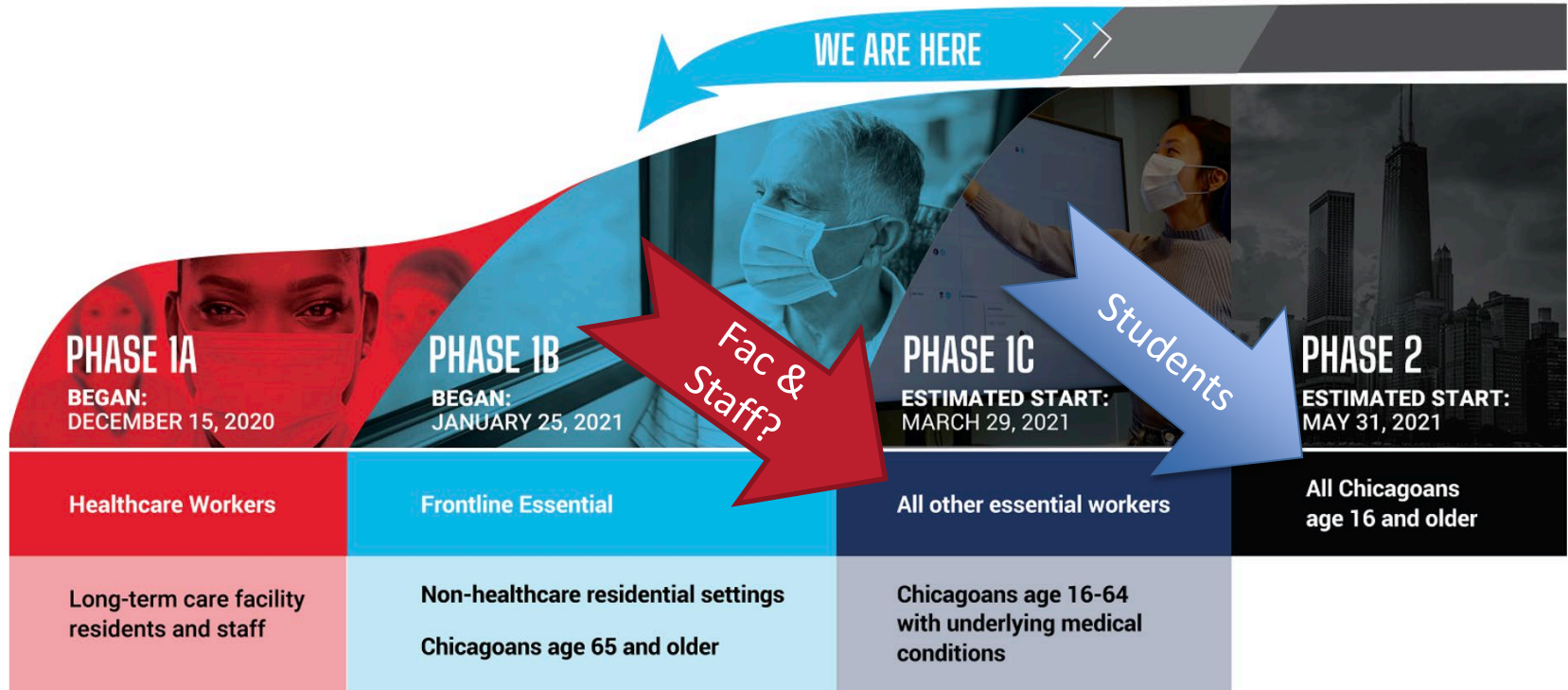
Three weeks ago, I announced we would have enough vaccine supply for all Americans by the end of July.

Now, with our efforts to ramp up production, we will have enough vaccines for every American by the end of May.

3:29 PM · Mar 2, 2021 · The White House

- Also, urged states to get at least one dose in arms of all K-12 educators by end of March

City of Chicago COVID-19 Vaccine Allocation Plan



<https://www.chicago.gov/city/en/sites/covid19-vaccine/home/vaccine-distribution-phases.html>

ILLINOIS 1B+ - cancer, chronic kidney disease, Chronic Obstructive Pulmonary Disease (COPD), diabetes, heart conditions, immunosuppressed states from a solid organ transplant, smoking, obesity, pregnancy, pulmonary disease, and sickle cell disease

Participation

	Recipients	Responded	Response Rate
Faculty	2,600	1,158	44.5%
Staff	1,714	1,138	66.4%
Stu Empl	2,549	1,075	42.2%
Total	6,863	3,371	49.1%

- Includes full-time and part-time employees

Overall Plans for Vaccination

Number of Responses

	No Plans	Undecided	Have or appt	Will get	Total
Faculty	28	24	225	881	1,158
Staff	33	81	72	952	1,138
Student Empl	34	71	62	908	1,075
Total	95	176	359	2,741	3,371

Targeted Messages 3,100

% of Each Employee Type's Responses

	No Plans	Undecided	Have or appt	Will get	Total
Faculty	2.4%	2.1%	19.4%	76.1%	100.0%
Staff	2.9%	7.1%	6.3%	83.7%	100.0%
Student Empl	3.2%	6.6%	5.8%	84.5%	100.0%
Total	2.8%	5.2%	10.6%	81.3%	100.0%

92.0%

Resources

- <https://resources.depaul.edu/coronavirus/resources/Pages/vaccine.aspx>
- www.zocdoc.com